



# Replacing the Print Head on a T-Jet 2

---

Version 2 May 2008

## Introduction

This guide is designed to take you through the process of replacing your print head step-by-step. Please read all of the sections of this guide prior to beginning the replacement process so you can familiarize yourself with the different procedures.

Should you have any questions along the way, feel free to contact our Support Department for assistance.

Equipment Zone Support Contact Info:

Toll Free	+1 800-408-0040
Technical Support	+1 201-797-1506
Office	+1 201-797-1504
Fax	+1 201-797-1505
Email	support@equipmentzone.com
Internet	www.equipmentzone.com



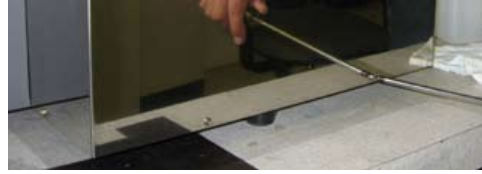
Equipment Zone  
17-20 Willow Street  
Fair Lawn, NJ 07410 USA

Technical Guide  
Replacing the Print Head on a T-Jet 2

1. Turn OFF the power to your printer and unplug it from its AC power source.
2. To facilitate the replacement of the print head, much of the printer housing must be removed. Remove both chrome side panels, the left cross bracing, the button bar and the rear gray housing. Also remove all of the ink cartridges.



Step 1- Remove 4 screws from left side cover



Step 2- Remove 4 screws from right side cover



Step 3- Remove 2 screws from left cross brace



Step 4- Remove 2 screws from button bar

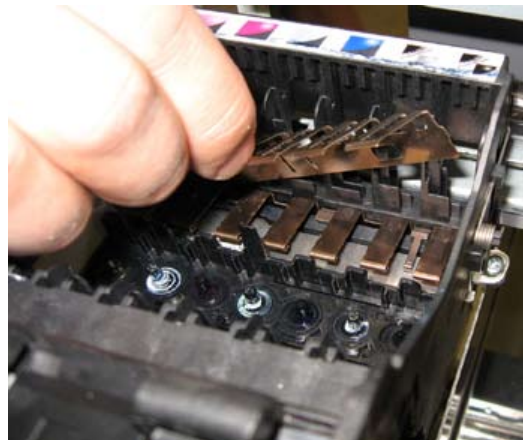
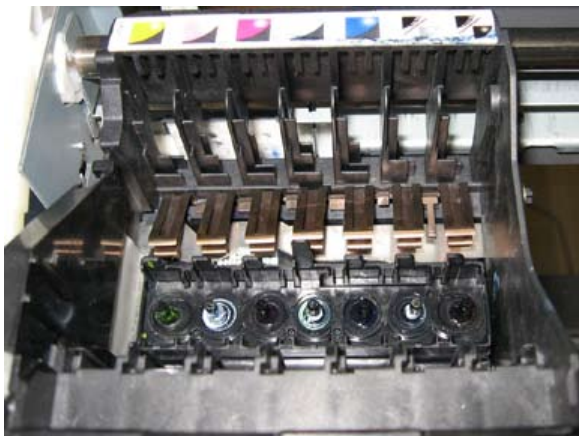


Step 5- Remove 2 screws from rear gray housing

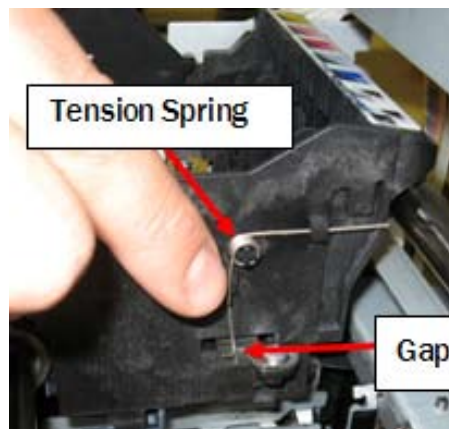


Printer with all necessary  
housing components removed

3. Once you have removed the cover and cartridges, you will notice two brass leaf springs that help keep the ink cartridges in place. These can be removed with a gentle lifting motion. They are held in place by pressure from a plastic tab, so some slight wiggling may be necessary. Remove both leaf springs, one at a time and set aside.

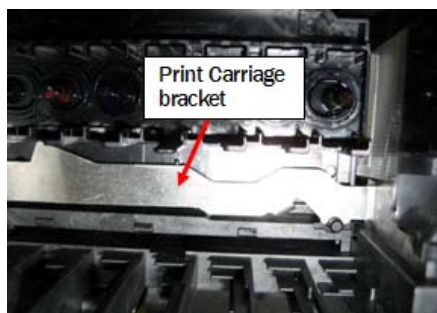


4. There is a small tension spring located on the print head assembly that now must be released. The spring is on the side opposite the capping station and its end rests in a metal gap at the base of the assembly. Slide the lower end of the spring from this gap.



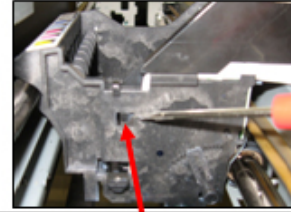
5. Locate the two screws on opposite sides of the print head carriage assembly. With a Phillips Head screwdriver, remove both screws.

6. This frees up the print carriage bracket holding the print head in place. Remove the bracket with a 1/4 upward twist. Slide the bracket halfway out the LEFT side of the print head carriage assembly before tilting the other end upward. Remove the bracket through the top of the assembly.



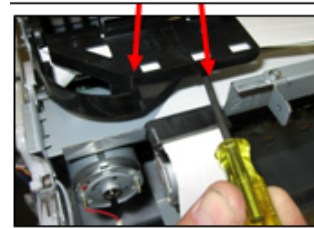
7. Locate the three plastic tabs that secure the ribbon cable holder in place. One will be on the capping station side of the assembly. The other two tabs will be located on the back of the assembly, underneath the ribbon cable.

With medium pressure from the tip of a small screwdriver, pop out each tab while gently lifting the ribbon cable holder.



Make sure to release all three tabs.

8. With ribbon cable assembly freed from the carriage assembly, you can now lift out the print head.



9. One at a time, **gently** remove the two ribbon cables from the print head. Pinch the ribbon cables from the top and bottom close to the print head. With a sliding motion separate the print head and the cables.

**Do not** wiggle the cables to remove. **Do not** pinch inward or fold the sides of the cable.



Place the old print head in a plastic Ziploc bag and throw it in into the trash.

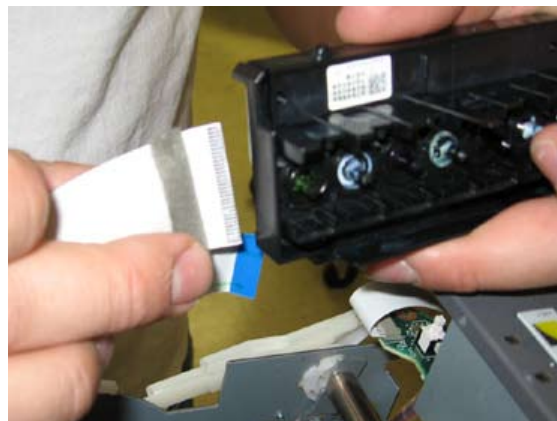


## Installing the New Print Head

1. Insert the both sets of ribbon cable into the appropriate slots on the new print head. Note the ribbon cables are different widths; be sure to match up the small cable with the small port and the large cable with the large port.

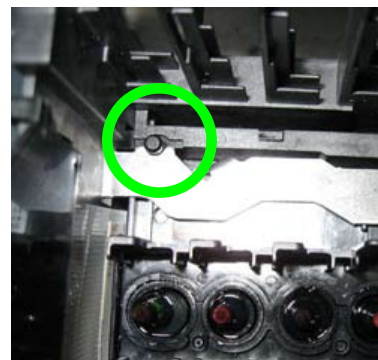


2. When inserting the ribbon cable, align the metal connection plates on the ribbon cables with the metal connector on the print head.



3. Set the print head within the carriage assembly, pressing it down and against the back of the carriage.

4. Locate the print carriage bracket and replace. Note that there is a small plastic post that aligns with a notch in the bracket. Use this as a guide when inserting the bracket.

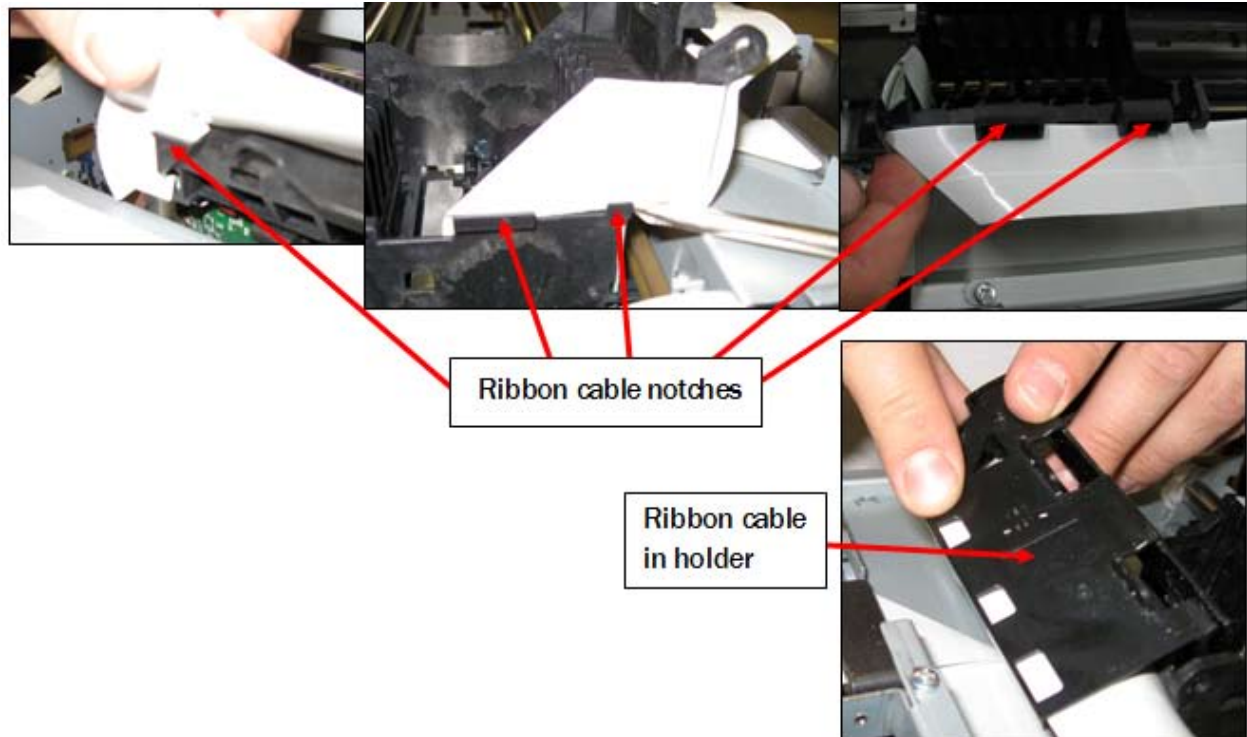


5. Replace the two brackets screws starting with the screw on the capping station side. **Do not** over-tighten either screw!

6. Replace the leaf springs.

7. Along the back and sides of the carriage assembly are a series of notches designed to hold the ribbon cables in place. Gently slide the cables into these notches.

8. Slide the ribbon cables over the three tabs in the cable holder and gently lower it into place.



9. When lowering the ribbon cable holder into place, the cable tends to bunch in the corner. Do not force the holder into place. Gently press down on the holder making sure not to crimp or crease the ribbon cable. If you feel any resistance, check for bunching and folds in the cable. It may have to be coaxed into place. The ribbon cable holder assembly should snap into place with only a little gentle prodding from the top and sides.

10. Replace the ink cartridges

11. Replace the printer covers.

12. Plug in the AC power cord